



Margaret River Senior High School School Drug Education Guidelines

Our Vision

At Margaret River Senior High School, drug education is integral to the well-being of our students. We partner with the wider community to promote health and well being in our drug education initiatives. We are committed to improving opportunities, choices and outcomes for all students.

Our School Commitment

Our School Drug Education Guidelines are consistent with the *Principles for School Drug Education*. The guidelines promote a whole-school approach to drug education; where school staff, students, parents and the wider-school community work together. Our aim is to increase awareness and reduce risks of harm from drug use by providing and maintaining a safe and supportive school environment.

Our guidelines have been developed in consultation with staff, students, parents and community members to address drug education and necessary related interventions in a caring and consistent manner within the Margaret River Senior High School community.

Curriculum

- Our three-year drug education plan identifies age-appropriate drug education content across all year levels.
- We use evidence-based drug education resources such as *Challenges and Choices* (www.sdera.wa.edu.au) and other Australian Government resources. ([specific resources](#))
- School administration supports staff to deliver appropriate drug education by allowing in-school time for planning, providing professional development opportunities for staff and allocating funds for resources and materials.
- Classroom programs focus on skill development and develop students' knowledge and understanding, attitudes and values and promote help-seeking behaviour.
- A minimum of six hours of drug education per health semester is provided to all students in lower school.
- Learning is extended from the classroom to promote parent support of drug education programs (e.g. through the use of take-home activities).

Ethos and Environment

- A School Health and Wellbeing Committee takes a drug education leadership role, with representatives from the teaching and administration staff, school health service staff, students and parents is supported.
- Drug education is included in whole-school planning.
- All students have the opportunity to participate in drug education programs and initiatives.
- *School Drug Education Guidelines* are reviewed on an [annual basis](#) in consultation with the school community. (*link in with other school guidelines*)
- School administration supports staff attendance at professional development to broaden their understanding and enhance their confidence in working well with drug use issues.
- We have developed and implemented *Procedures for Incident Management and Intervention Support* and these have been communicated through the whole-school community as a part of the *School Drug Education Guidelines*.

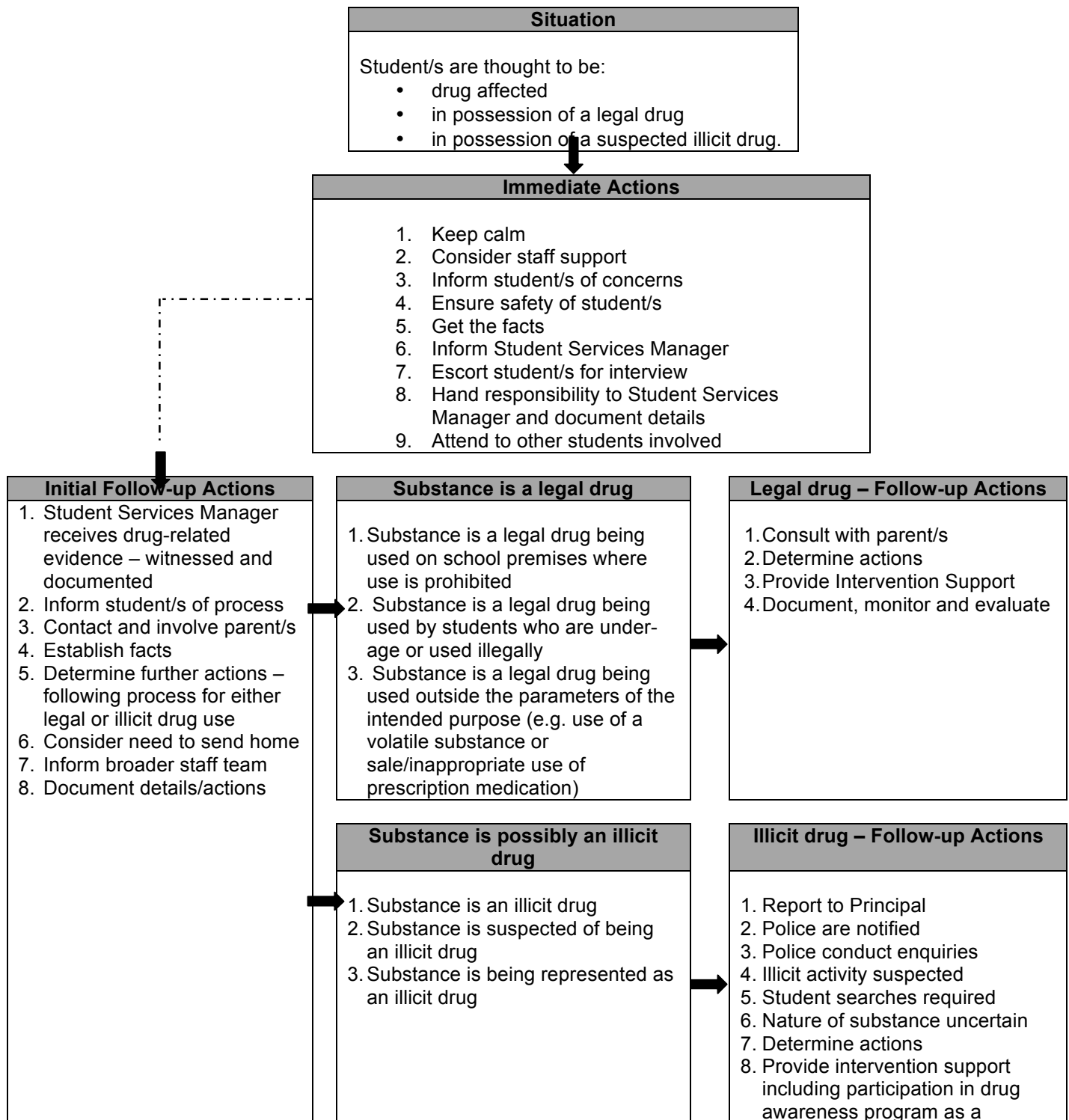
Parents and Community

- Parents and families are involved in drug education initiatives.
- Drug education information and strategies for parents and families are provided on a regular basis through a variety of methods such as the newsletter, website and at school assemblies.
- SDERA's *Connect* (www.sdera.wa.edu.au), is used to identify resources and agencies that support and complement our school drug education initiatives.
- Orientation packs to new staff members and families include our *School Drug Education Guidelines*.

Incident Management and Intervention Support

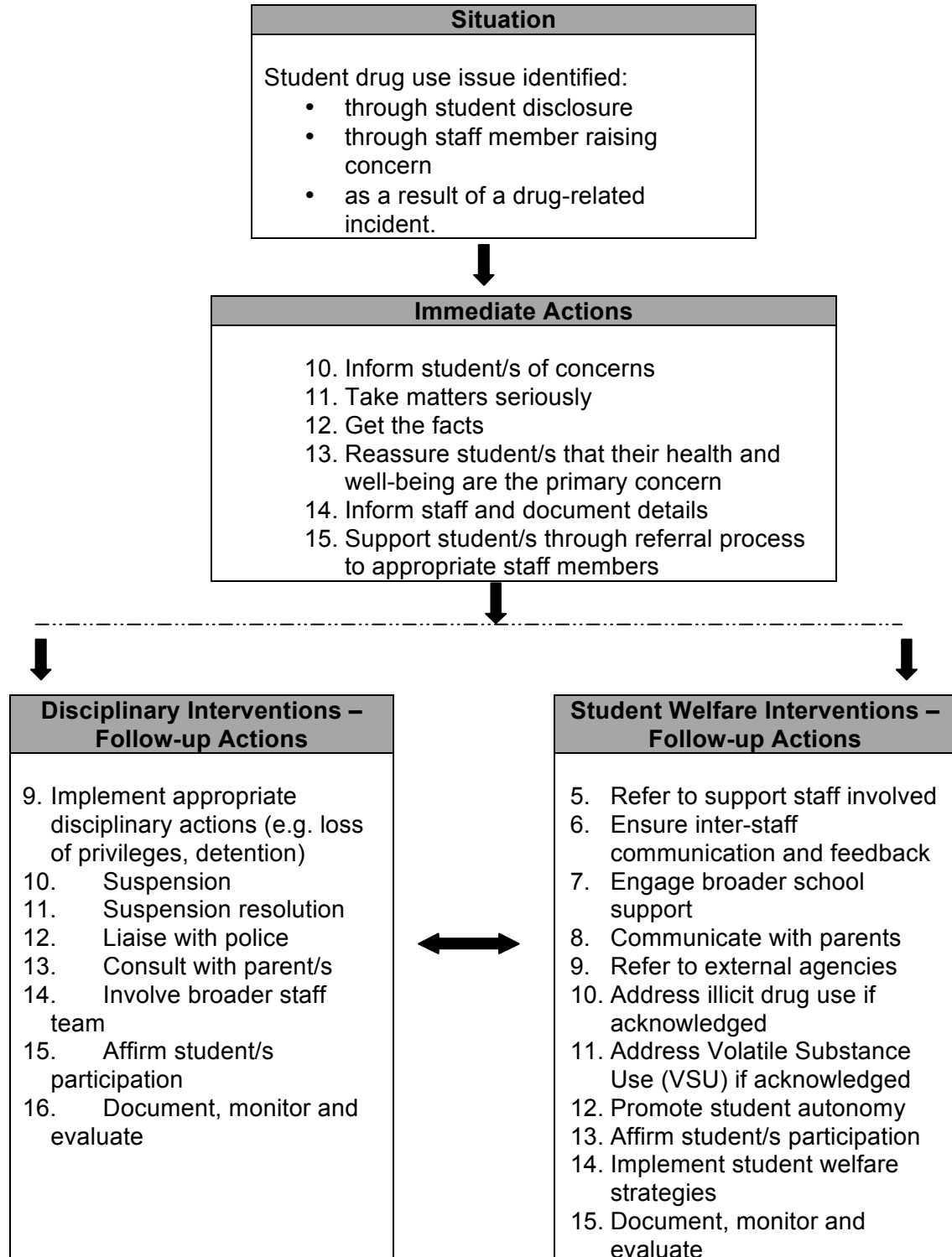
The following Incident Management and Intervention Support flow charts illustrate the steps which will be taken in the event of a drug use incident or issue. Should you wish to contact school personnel in this regard, contact details are provided.

Incident Management - Procedures to follow INCIDENT MANAGEMENT



Intervention Support - Procedures to follow

INTERVENTION SUPPORT



In the event of a drug use incident or where a student requires intervention for a drug use issue, the steps outlined in our flow charts for Incident Management and Intervention Support will be followed. In summary:

- the parent/s will be notified by appropriate personnel
- the Principal will consider notifying police if illicit drug use is suspected
- both students and parents will be offered support through appropriate interventions
- the incident or issue will be documented and other relevant agencies involved
- respect will be given to privacy and confidentiality by and for all parties
- the health and well-being of all parties involved will be given priority.

Margaret River High School does not permit students while on school premises, at any school function, excursion or camp to:

- smoke and/or possess tobacco products
- consume, possess or be affected by alcohol
- possess and/or use pharmaceutical drugs for non-medicinal purposes
- possess and/or use volatile substances
- possess and/or use illicit drugs
- possess and/or use drug-related equipment, with the exception of for intended legitimate medicinal use.
- Or be in the presence of another student with any of the above behaviours.

All school staff should confirm the procedures regarding the administration of

School contacts	Useful contacts and information
Principal Andrew Host Contact number: 97570701	School Drug Education and Road Aware (SDERA) (08) 9264 4743 www.sdera.wa.edu.au
Deputy Principal Merv McKillop Contact number: 97570702	Alcohol and Drug Information Service (08) 9442 5000 or 1800 198 024
Deputy Principle Hetty Bogerd Contact Number 97570703 Student Services Co-ordinator Lee Pike Contact number: 97570720	Community Drug Service 9721 9256 Local Police Station 9757 2222
School Health Nurse Sandra Robertson Contact number: 97570719	