



Department of
Education

Shaping the future

Standalone bushfire plan 2023-2024

Margaret River Senior High School

May 2023



Purpose

The *Standalone bushfire plan* document is a detailed plan of how your school is to prepare and respond to a catastrophic fire danger rating alert or to a bushfire event.

As principal, you must complete this template to have a plan in place to respond to a bushfire emergency. This plan is to be read in conjunction with information on Ikon to [prepare for bushfire season at your school](#).

All staff, students, contractors and visitors on the school or facility site are to follow this completed plan in the event of a bushfire emergency. All other emergencies are to be managed in accordance with the school's incident management plan, as per the [Incident management manual](#).

Complete and lodge your plan online by 31 August.

Contents

1	School details	3
2	Emergency response contact list	4
	2.1 Important bushfire emergency contact sources	5
3	School Response Team	6
4	Bushfire response telephone tree	7
5	Emergency equipment	8
6	Bushfire preparation checklist	9
7	Bushfire action plan maps	11
	7.1 Onsite 'safer building location(s)'	11
	7.2 Offsite evacuation locations	12
	Appendix A - Bushfire warning stages	13
	Appendix B - Procedures in the event of a sudden bushfire	15
	Relocate to onsite 'safer building location'	15
	Offsite evacuation procedures	17
	Appendix C - Pre-emptive (planned) closure procedures	19
	Flow chart – Principal's response to Fire Behaviour Index of 75 (Extreme Fire Danger Rating) or greater	20
	Appendix D – After-hours or school holiday procedures	21

1 School details

To complete this plan, on the front cover of the document:

- insert your school name
- add the year for the new bushfire season
- add the date in the footer to show when the plan became active.

Enter information into the **grey** sections of this document, following the prompts in the square brackets where featured. You can add extra rows to tables where necessary.

When your plan is complete, follow the steps on Ikon to [lodge, update or access your standalone bushfire plan online](#).

School name (include name of co-located school or facilities if applicable)	Margaret River Senior High School
School address	158 Bussell Highway Margaret River WA 6285
Education Region	South West
Number of students	1170
Number of students requiring extra support if evacuating	Nil
Number of staff	135
Number of school sides bordered by bush	1
Names of major roads bordering school	2
School's site-specific alert, for example: <ul style="list-style-type: none"> • siren/pause x 3 • continuous handbell • continuous siren or short whistle blasts 	continuous siren or short whistle blasts

Plan prepared by (principal's name)	Andrew Host
Date prepared or reviewed	30/08/2023

2 Emergency response contact list

Enter the contact details into the following table:

Organisation	Details	Phone number / website
Local police (for example, name of nearest police station)	Margaret River Police	9757 2222
Local hospital (name of nearest hospital or medical emergency facility)	Margaret River Hospital	9757 0400
Department of Fire and Emergency Services regional contact	Brendan Jordan	9780 5285/ 0419 905 285
Local fire brigade (for example, name of nearest fire station)	Margaret River	9757 2738
Chief Bushfire Control Officer	Richard Nash	9757 6683/ 0419 951 511
Bus contractors (ready for pre-emptive closure or offsite evacuation)	School Bus Service: Shepherdson Transport South West Coachlines	9326 2784 9757 2955 9753 7700
Electricity provider - in the case of a power outage (for example, Horizon Power, Western Power)	Synergy	131 351
State emergency service (if known)		9757 3000
Poisons information (where relevant)		131 126
Director of Education name	South West Region Sue Cuneo	9791 0316

2.1 Important bushfire emergency contact sources

DIAL 000 in an emergency

- **Emergency WA**
 - Website: <https://www.emergency.wa.gov.au/>

- **Department of Fire and Emergency Services**
 - Information line: 13 33 37
 - Website: <https://www.dfes.wa.gov.au/>
 - Facebook: <https://www.facebook.com/dfeswa>
 - Twitter: https://twitter.com/dfes_wa

- **ABC Emergency**
 - Website: <https://www.abc.net.au/emergency>

- **Local radio**
 - ABC local radio: Find your local radio station at <https://www.abc.net.au/local>
 - 6PR: Listen online at <https://www.6pr.com.au/listen-live/> or tune into AM 882 and Digital Radio

3 School Response Team

Enter the names and mobile numbers of the staff responsible for carrying out emergency procedures during a bushfire event. The principal coordinates the incident response to onsite or offsite locations (refer to Appendix B & C procedures).

Examples of suggested duties include:

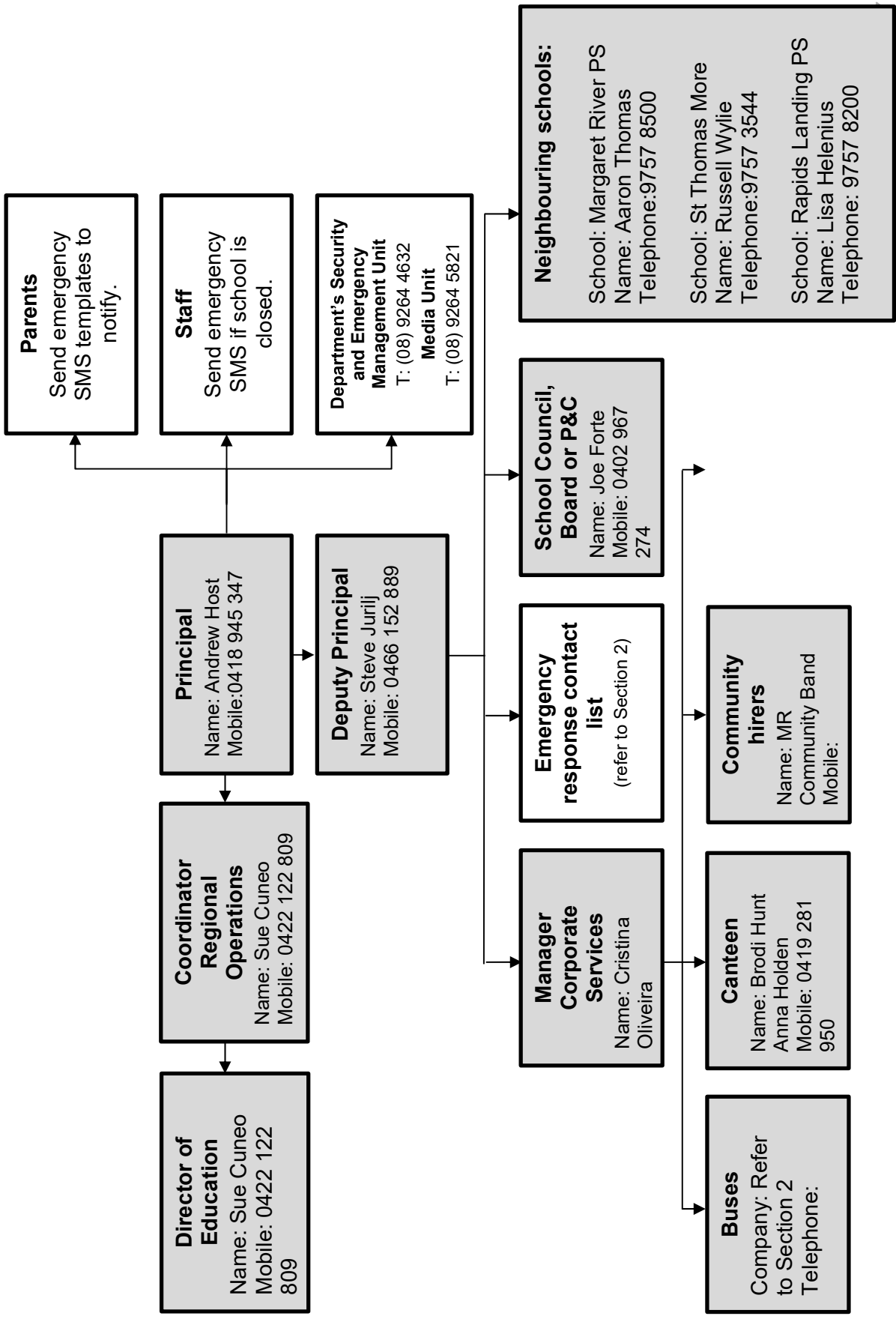
- fire warden duties
- checking all rooms
- keeping a copy of school registers for roll call
- monitoring the bushfires warnings stages (as per Appendix A)
- send out text alerts to parents
- liaising with emergency services, community members, parents and carers.

Consider making cards that outline the duties of the school response team. This can be useful to hand out at the start of the incident.

Position	Staff name	Duties	Mobile number
Principal	Andrew Host	Control Manager	0418 945 347
Deputy Principal	Steve Jurilj Mandy Carey Hetty Bogerd	Site Emergency Manager Staff Emergency Manager Student Emergency Manager	0466 152 889 0408 901 969 0429 028 694
Manager Corporate Services	Cristina Oliveira	Non-Teaching Staff Emergency Manager	0416 971 422
Teachers		As outlined in Emergency Management Procedures	
Accredited first aid officers	Berin Sluiter Wendy Coffey Paul Farmer	Administer 1 st Aid	
Other (if applicable)			

4 Bushfire response telephone tree

Complete the information boxes with the contact details for the relevant stakeholders.



5 Emergency equipment

Identify the location and the type of emergency equipment at your site.

Equipment	Details (include location/s, date checked and any other comments)
Evacuation kit (section 7 of the school Incident Management Plan).	Evacuation Kit bag behind divider in Admin Front Office. Checked 9/8/23
First aid kit(s) - include masks in case some students are susceptible to smoke.	4 First aid kits – located Admin and Student Services. Each contains Epipen. Checked 18/07/23
Emergency alert system and communication equipment, for example: <ul style="list-style-type: none"> • mobile telephones (charged) • hand-operated fire alarm (portable siren) • megaphone/loud hailer • portable CB radios • spare batteries. 	PA system Mobile phones Checked 09/08/23 Checked 09/08/23 N/A
Registers for: <ul style="list-style-type: none"> • students • staff • visitors. 	Passtab for visitors and staff SEQTA on Tablet or mobile phone
Standalone bushfire plan: <ul style="list-style-type: none"> • hard copy in the evacuation kit • copy saved to an online platform for access offsite. 	<ul style="list-style-type: none"> • Hard copy in the evacuation kit. • Hard copies with principal, deputies & OHS officer. Updated 24/6/23. Bushfire Plan updated 09/08/23 Copy saved to DOE online platform for access offsite

6 Bushfire preparation checklist

<p>Principals must:</p> <ul style="list-style-type: none"> • complete this bushfire preparation checklist annually • inform all staff members of their responsibilities. <p>You can provide details of your preparation activities in the comments.</p>		
Management activities	☑ or N/A	Comments
The annual review of the Standalone bushfire plan has been completed before the start of bushfire season.		09/08/2023
<p>Consulted and received advice in preparing your Standalone bushfire plan from any of the following(as relevant):</p> <ul style="list-style-type: none"> • local Emergency Services • Department of Fire and Emergency Services • Department of Biodiversity, Conservation and Attractions – Parks and Wildlife Service • local volunteer fire brigade • WA Police Force • local emergency management committee (LEMC) or local government representative • community emergency services manager, if there is one for the area. 		Local Volunteer Fire Brigade – Aaron McRae
<p>Staff have been made aware of the Standalone bushfire plan through:</p> <ul style="list-style-type: none"> • staff meetings • staff bushfire induction session that includes: <ul style="list-style-type: none"> – an overview of the Standalone bushfire plan – how to turn off evaporative air conditioner units, the location of switches – how to close roof vents – the types of bushfire warnings issued by the Department of Fire and Emergency Services and the Emergency Alert telephone warning system – to direct bushfire media enquiries to the Department’s media unit (08) 9264 5821. 		16/08/2023 Planned for 07/09/2023
<p>Students and parents or carers have been made aware of the Standalone bushfire plan through:</p> <ul style="list-style-type: none"> • key bushfire safety messages incorporated into the curriculum • newsletters • school information booklet (include actions and procedures) • school website. 		Risk management in Year 11 and 12 UOC 30/08/2023 in newsletter Plan on school website under Parent Information

Principals must:

- complete this bushfire preparation checklist annually
- inform all staff members of their responsibilities.

You can provide details of your preparation activities in the comments.

Management activities	☑ or N/A	Comments
<p>Communication plans are in place:</p> <ul style="list-style-type: none"> • Emergency response contact list completed (section 2). • Bushfire response telephone tree completed (section 4). • communication templates for sample emergency text message, newsletter content and school notice text are complete (refer to Appendix D). <p>Contact lists for staff and parents must be current.</p>		Checked 09/08/23
<p>Emergency equipment available and checked (section 5):</p> <ul style="list-style-type: none"> • evacuation kit checked at least once per term • emergency warning or alert system works • emergency communications equipment available • first aid kit(s) available • registers for students, staff and visitors readily accessible for roll call. 		Ongoing
<p>Practise drills moving to your onsite 'safer building location(s)':</p> <ul style="list-style-type: none"> • before the start of the bushfire season • at least once per term during the bushfire season. <p>You must do at least 2 drills per year.</p>		1 st Drill for 2023-24 bushfire season is Tuesday 12 th of September, 2023
<p>The asset protection zone, which is a minimum distance of 20 metres surrounding the main school buildings, is checked and is:</p> <ul style="list-style-type: none"> • clear of all rubbish, long dry grass, bark, flammable and combustible materials, including leaf litter and unused piles of mulch • maintained routinely throughout the year. <p>For information on the asset protection zone, refer to Prepare for bushfire season at your school on Ikon.</p>		Ongoing

7 Bushfire action plan maps

7.1 Onsite 'safer building location(s)'

Information to help select your offsite evacuation location and a sample map is available on Ikon in [Prepare for bushfire season at your school.](#)

Emergency, dial 000

Primary action:
Determine if the bushfire is a threat to the school. Monitor official sources listed in section 2.

Secondary action:
Refer to Appendix B for the procedures to relocate to onsite 'safer building location(s)'.
School gymnasium
Entry points as outlined on map

Map last updated: 30/08/2023




7.2 Offsite evacuation locations

Information to help select your offsite evacuation location and a sample map is available on Ikon in [Prepare for bushfire season at your school](#).

	<p>Emergency, dial 000</p> <p>Primary action: Determine if the bushfire is a threat to the school. Monitor official sources listed in section 2.</p> <p>Secondary action: Refer to Appendix B for the procedures to Relocate to an offsite evacuation location</p>
	<p>Offsite Evacuation MREC Winery Building School Farm Carpark via School Farm Road</p> <p>Margaret River Primary Undercover Area Access via crossing Bussell Highway</p> <p>Map last updated: [30/08/2023]</p>

Appendix A - Bushfire warning stages

Emergency services communicate information in a number of ways during a bushfire event. Use these warnings to understand when your need to activate your bushfire procedures (refer to Appendix B).

Bushfire warning stages	
<p>ADVICE</p> 	<p>A fire has started, be aware and keep up to date.</p> <p>This is general information to keep principals informed and up to date with developments.</p> <p>Principals must:</p> <ul style="list-style-type: none"> • turn off evaporative air conditioners and ensure roof vents are closed. • check and patrol the school regularly for bushfire activity, paying particular attention to the evaporative air conditioners.
<p>WATCH AND ACT</p> 	<p>There is a possible threat to lives and property. Conditions are changing.</p> <p>Principals must prepare to:</p> <ul style="list-style-type: none"> • evacuate; or • move students, staff and visitors to their pre-determined onsite 'safer building location'. They must not be moved to an open area. <p>Evacuation orders are:</p> <ul style="list-style-type: none"> • issued by the Incident Controller or Emergency Services if required. • relayed via official sources such as Emergency WA. <p>It is vital that the principal:</p> <ul style="list-style-type: none"> • accesses bushfire information from official sources • makes an informed decision to stay onsite or evacuate offsite based on advice from the Incident Controller or Emergency Services.
<p>EMERGENCY</p> 	<p>A school is in danger as its area will be impacted by fire. Take immediate action to survive.</p> <p>The principal will be advised whether staff, students and visitors can leave the area or if they must shelter where they are as the fire burns through the area.</p> <p>A siren, called the State Emergency Warning Signal (SEWS), may accompany an emergency warning.</p> <p>Evacuation orders are:</p> <ul style="list-style-type: none"> • directed by the Incident Controller or Emergency Services. • relayed via official sources, such as Emergency WA.

	<p>It is vital that the principal:</p> <ul style="list-style-type: none">• accesses bushfire information from official sources• makes an informed decision to stay onsite or evacuate offsite based on the advice.
<p>ALL CLEAR</p>	<p>The danger has passed, and the fire is under control, but stay alert in case the situation changes.</p> <p>It may not be safe to return to school yet.</p>

Appendix B - Procedures in the event of a sudden bushfire

Relocate to onsite 'safer building location'

You may be instructed to relocate to your onsite 'safer building location(s)'. Do not use an open area such as a school oval or non-enclosed building.

Initiate this procedure if either of the following occurs:

- a 'Watch and Act' or 'Emergency Warning' alert is issued on the [Emergency WA](#) website (refer to Appendix A for details about the alerts)
- instruction from the Department of Fire and Emergency Services, Emergency Services or your Director of Education.

Follow these procedures to relocate to the onsite safer building location(s).

Action	Notes (if required)
<p>Dial 000 for emergency services and request fire brigade.</p> <p>When connected to Department of Fire and Emergency Services, advise:</p> <ul style="list-style-type: none"> • your school name and address • the fire situation • how many students and staff are being impacted • if moving to a 'safer building location' and where it is located • if anyone requires medical attention • CB radio channel, if being used. <p>Remain in contact with the Department of Fire and Emergency Services.</p> <p>Monitor official bushfire emergency information contact sources in section 2.1.</p>	
<p>Activate your school response team to carry out their responsibilities (section 3).</p>	
<p>Use your emergency response contact list to contact stakeholders (section 2).</p>	
<p>Follow your bushfire response telephone call tree (section 4) to communicate with the school community.</p> <p>Ensure parents receive emergency text message alerts to:</p> <ul style="list-style-type: none"> • inform them of relocation • keep them updated (use the emergency text message alert templates, refer to Manage bushfire incident communications on Ikon). <p>Parents must not collect students until instructed.</p>	

<p>Confirm:</p> <ul style="list-style-type: none"> • evaporative air conditioners are turned off • all building roof vents, windows and doors are closed before anyone enters the onsite safer building location(s). • where possible and safe to do so, relocate vehicles or other combustible items (school bags, rubbish bins etc) at least 20 metres from safer building locations. • monitor embers for possible ignition. 	
<p>Take emergency equipment (section 5):</p> <ul style="list-style-type: none"> • registers for students, staff and visitors • evacuation kit • water • mobile phones (charged) • student medication 	
<p>Sound the school emergency warning or alert system.</p>	
<p>Follow advice from the incident controller, emergency services, the Manager Security and Emergency Management or the director of education to move to the onsite safer building location(s) (section 7.1)</p> <p>Students and staff must remain in classrooms unless they are directed to move to an onsite safer building location.</p>	
<p>Check student, staff and visitor registers after moving to an onsite safer building location (roll call). Advise the police if anyone is missing.</p> <p>You must give special consideration to students with known respiratory conditions.</p>	
<p>Wait for emergency services to arrive or the incident controller to provide you with information.</p> <p>Ongoing advice will also be provided by the Manager, Security and Emergency Management or the director of education.</p> <p>Continue to monitor official bushfire information sources listed in section 2.1.</p>	
<p>The Department will consult the incident controller or emergency services and notify you when it is safe to return to classrooms or for students to be collected by parents. You will receive advice from the director of education.</p>	

Offsite evacuation procedures

You may be instructed to relocate to your offsite evacuation location.

Initiate your offsite evacuation procedure if a ‘watch and act’ or ‘emergency warning’ bushfire warning alert on the [Emergency WA](#) website is invoked (refer to the bushfire warnings listed in Appendix A) and you receive direction from either:

- Department of Fire and Emergency Services, incident controller or emergency services or
- the director of education.

Follow these procedures if you need to evacuate to an offsite evacuation location during a bushfire event.

Action	Notes (if required)
<p>Dial 000 for emergency services and request fire brigade.</p> <p>When connected to Department of Fire and Emergency Services, advise:</p> <ul style="list-style-type: none"> • your school name and address • the fire situation • how many students and staff are being impacted • if moving to a ‘safer building location’ and where it is located • if anyone requires medical attention • CB radio channel, if being used. <p>Remain in contact with Department of Fire and Emergency Services and your director of education.</p> <p>Monitor official bushfire emergency information contact sources listed in section 2.1.</p>	
<p>Activate your School response team to carry out their responsibilities (section 3).</p>	
<p>Refer to the Emergency response contact list to contact stakeholders (section 2).</p>	
<p>Follow advice from the emergency services or the Manager, Security and Emergency Management or the director of education to decide which of the school’s offsite evacuation location(s) is the safest to use (section 7.2).</p>	
<p>If safe to do so, muster at the identified assembly area where staff, students and visitors can gather to prepare for offsite evacuation.</p> <p>Use an alternative assembly area if your first identified assembly area is unsafe.</p> <p>Note: Students and staff must remain in classrooms unless they are directed to move to an onsite safer building location and/or onsite assembly area.</p>	

<p>Follow the Bushfire response telephone call tree to communicate with the school community (section 4).</p> <p>Ensure parents and carers receive emergency SMS alerts to:</p> <ul style="list-style-type: none"> • inform them of relocation • keep them updated (use the emergency text message alert templates, refer to Manage bushfire incident communications on Ikon). <p>Note: Parents must not collect students until instructed.</p>	
<p>Confirm:</p> <ul style="list-style-type: none"> • evaporative air conditioners are turned off • building roof vents and doors are closed. 	
<p>Take emergency equipment (section 5):</p> <ul style="list-style-type: none"> • registers for students, staff and visitors • evacuation kit • mobile phones (charged). • student medication. <p>Sound the school emergency warning or alert system.</p>	
<ul style="list-style-type: none"> • Notify bus operators • Notify other contractors scheduled to visit the site • Move all students, staff and visitors from the assembly area to the offsite evacuation location. 	
<p>Check registers after evacuating staff, students and visitors (roll call). Advise the police if anyone is missing.</p>	
<p>The Manager, Security and Emergency Management or the director of education will provide ongoing advice. Continue to monitor official bushfire information sources listed in section 2.1.</p>	
<p>The Department will consult the incident controller or emergency services and notify you when it is safe to return to classrooms or for students to be collected by parents. You will receive advice from the director of education.</p>	

Appendix C - Pre-emptive (planned) closure procedures

You may be instructed to pre-emptively close your school due to a fire behaviour index of 75 (extreme fire danger) or greater being forecast.

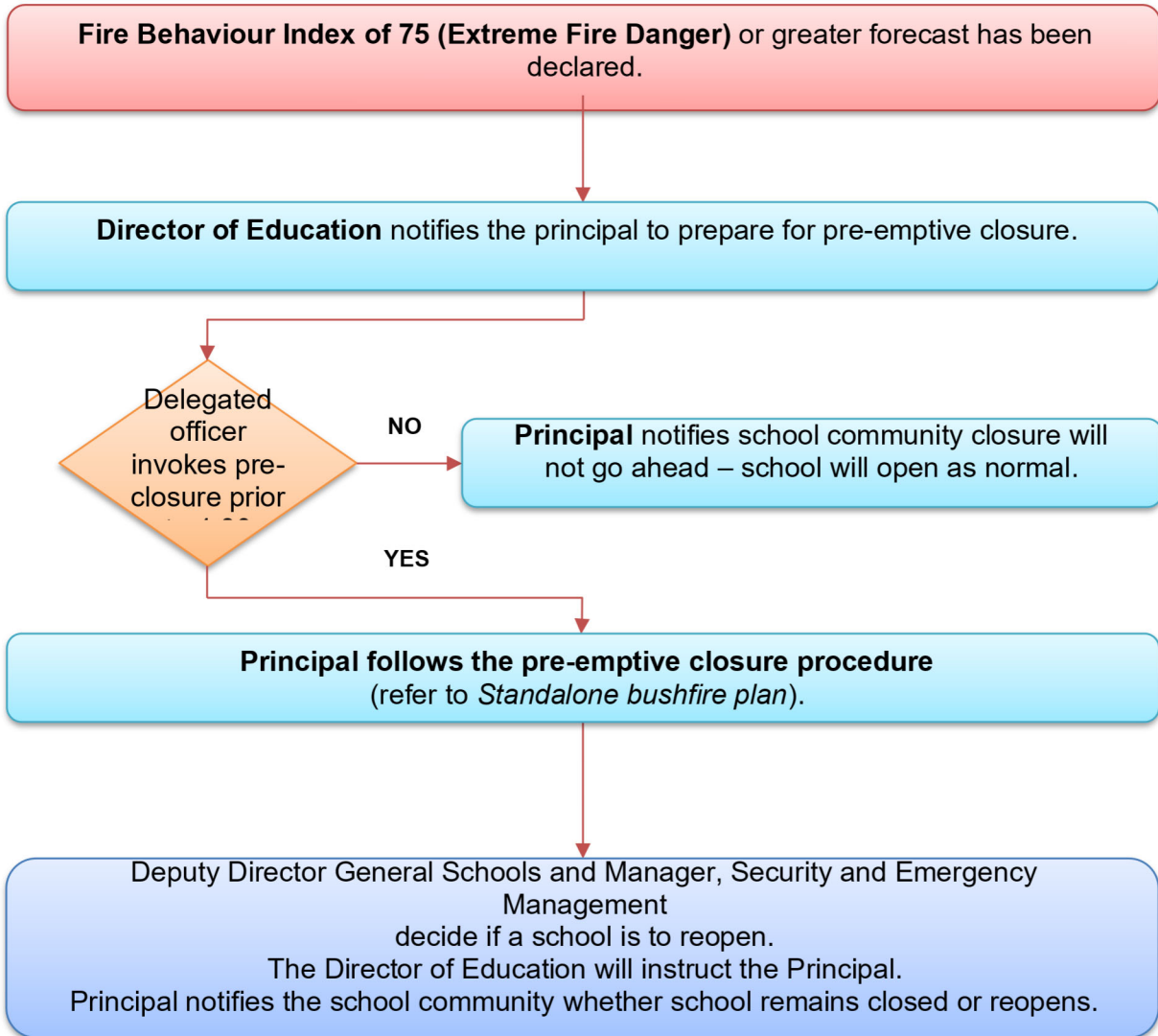
Initiate the closure procedure if you receive advice from the director of education or the Security and Emergency Management unit.

Follow these procedures for a planned school closure.

Action	Notes (if required)
Monitor official bushfire emergency information contact sources listed in section 2.1.	
Activate your School response team to carry out their responsibilities (section 3).	
<p>Communicate the pre-emptive closure, continued closure or school reopening:</p> <ul style="list-style-type: none"> • use your Emergency response contact list to contact stakeholders (section 2) • use your Bushfire response telephone tree (section 4) • use communication templates in Manage bushfire incident communications for SMS, social media posts and Connect notices to keep the school community informed • place the notice of temporary closure on external school access points and on the school website. <p>Note: Contact lists for staff, parents and carers must be current.</p>	
<p>Confirm:</p> <ul style="list-style-type: none"> • windows and doors are closed • evaporative air conditioners are turned off • roof vents closed • money is removed from the school premises • expensive items of equipment secured. 	
<p>Secure school premises and activate security system.</p> <p>Before departing, email AssetPlanningServices.SecurityEM@education.wa.edu.au or call 9264 4632 to confirm:</p> <ul style="list-style-type: none"> • all security systems armed • site is secure. 	
When the pre-emptive closure is cancelled, remove the notice of temporary closure from external school access points.	

Refer to the following Flow chart – Principal's response to fire behaviour index of 75 (extreme fire danger) or greater forecast.

Flow chart – Principal’s response to Fire Behaviour Index of 75 (Extreme Fire Danger Rating) or greater



Appendix D – After-hours or school holiday procedures

You may be instructed to keep your school closed during the school holidays or after hours during a bushfire event.

Initiate the below procedure if both of the following occur:

- A ‘Watch and act’ or ‘Emergency warning’ bushfire warning alert on the [Emergency WA](#) website is invoked (refer to the bushfire warnings listed in Appendix A)
AND
- Direction received from the Deputy Director General, Schools or the Manager, Security and Emergency Management. The director of education will relay the decision to you.

Follow these procedures if a bushfire starts during the school holidays or after hours.

Action	Notes (if required)
Remain in contact with your director of education and monitor official bushfire emergency information contact sources listed in section 2.1.	
Use your emergency response contact list to contact stakeholders (refer to section 2).	
Follow the bushfire response telephone call tree to communicate with the school community. Send parents and carers and staff emergency text message alerts to inform them of the school closure. To access sample SMS text, refer to Manage bushfire incident communications .	
Work with the director of education to seek alternative school and transport arrangements (if required).	
The Department’s Media Unit and Incident Support Unit uses media outlets and Emergency WA to make public announcements of: <ul style="list-style-type: none"> • the school closure • temporary alternative accommodation. 	
The Department will consult the incident controller or emergency services and notify you when it is safe for the school to reopen. You will receive advice from the director of education or the Manager, Security and Emergency Management.	
Send parents, carers and staff emergency text message alerts to inform them when school can reopen.	