

NAPLAN - Locked Down Browser Installation

All Year 7 and 9 students participating in NAPLAN online must install and test the Locked Down Browser (LDB) on their BYOD laptop prior to the practice test on the 24th of March.

Year 7 and 9 students will need to be familiar with opening the Locked Down Browser *before* test days. If you have previously installed the LDB, installing the latest version will automatically upgrade your version.

All 4 of the below steps **MUST** be completed.

The estimated time for the download, install and test is only 5-10 minutes.

1. **DOWNLOAD** the Locked Down Browser to your laptop
2. **INSTALL** the downloaded program
3. **OPEN** the Locked Down Browser, to verify you can open the program
4. **TEST** using the test menu option, including sound with headphones

See the ***Detailed Installation Instructions*** below for step by step help.

If you have any problems installing the Locked Down Browser, please email mrs.hs.it@education.wa.edu.au to assist, along with the name of your student and form.

On NAPLAN Test days:

- Students devices must have a full charge, to last the duration of the test.
- Students must set their headphone volume level ***before*** starting the Locked Down Browser
- Students must connect their laptop to the school wifi and confirm they can access a public website, such as google.com ***before*** starting the Locked Down Browser

Detailed Installation Instructions:

Step 1 - Download the Locked Down Browser

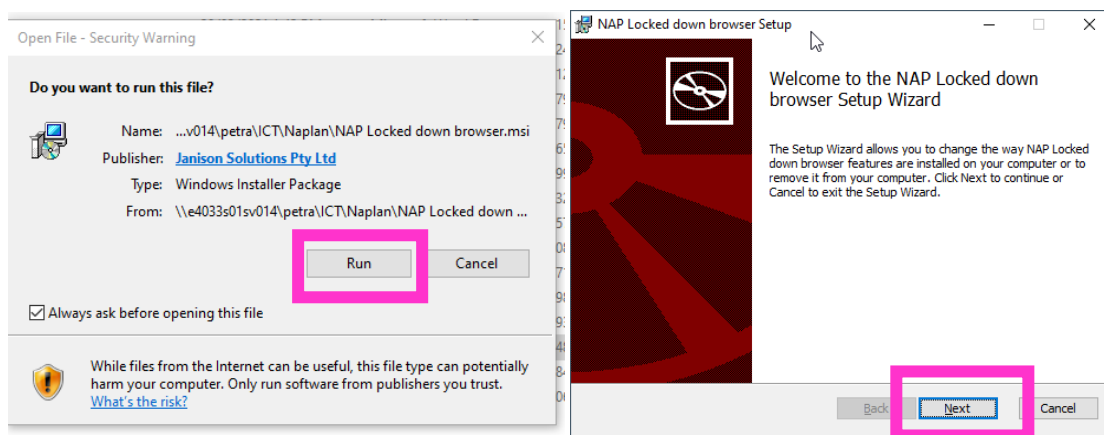
Click on the version for your laptop using one of the links below:

- Download for [Windows 10 or greater \(file size 42MB\)](#)
- Download for [MAC OSX 10.15.4 or greater \(file size 3.3MB\)](#)
- For all versions available to download click on this link to take you to the NAPLAN Locked down browser page: [Locked down browser \(assessform.edu.au\)](https://assessform.edu.au/locked-down-browser) then select the version you require

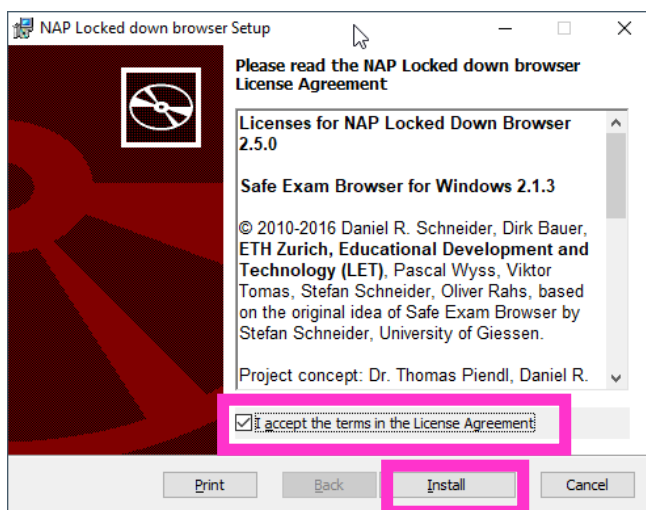
Step 2 - Install

For Windows

Once the download is completed, **open it from your internet browsers download tab**, or from the download folder in your documents (or where you saved it) – choose **Run** then **Next**:



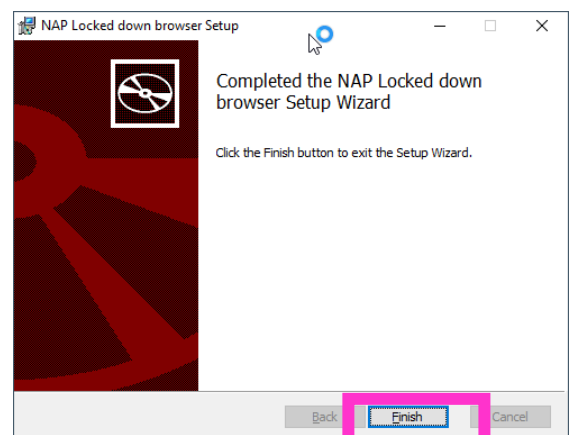
A set up window will appear. Tick the box to agree to the terms of the license and then select the **Install** button.



another window appears asking for permission to install the program, **click yes**.

Wait for the installation to complete and then **select finish**.

If



Step 2 – Install (continued)

For Apple Macbooks

Double click to open downloaded file



A window will appear requiring you to **drag the program into the Applications folder** on your computer.

NAP Locked down browser
Drag the application to the Application Folder



Select **Open**, if presented with a warning about being downloaded from the internet.

Step 3 - Open the Lockdown browser

Make sure that your sound is on and working.

For Windows

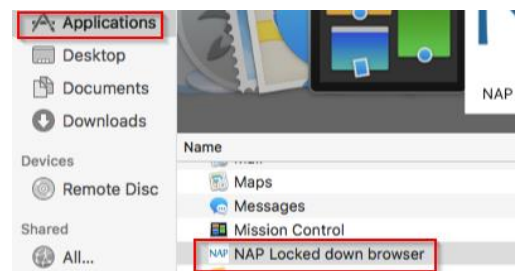
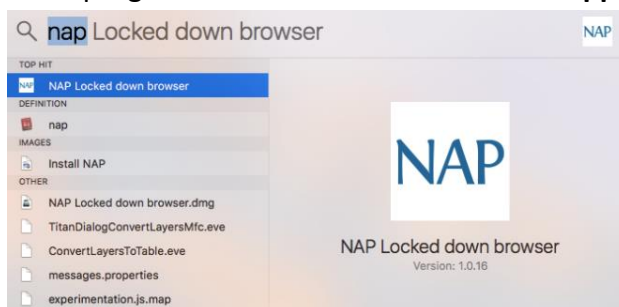
- **Double click the icon on your desktop** to start the Locked Down Browser.



*Windows -
Double click the
icon*

For Apple Macbooks

- The program **MUST** be started from the 'Applications' folder icon:

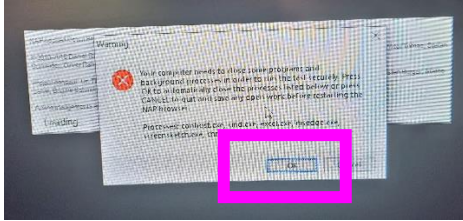


A. Search '**NAP**' and double click on the **NAP Locked Down Browser** result

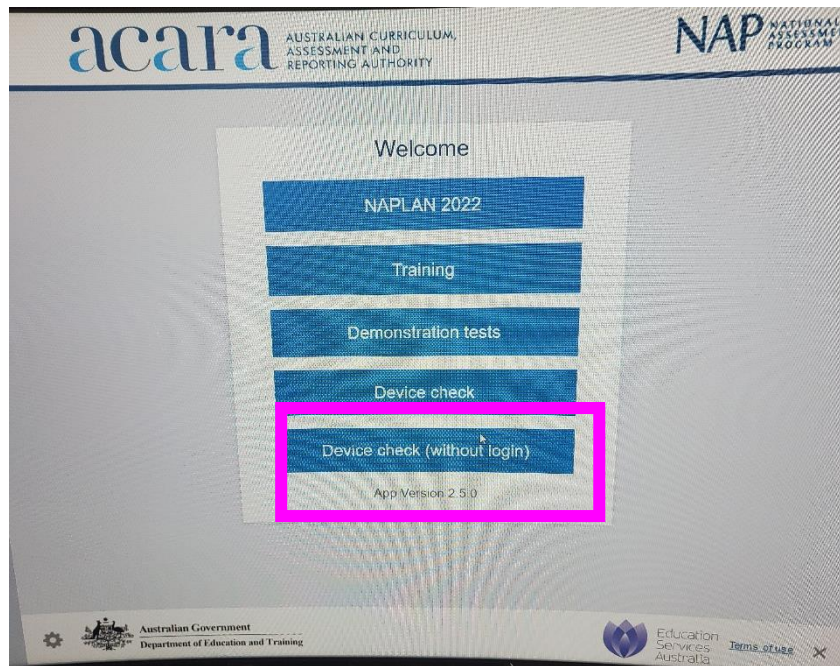
-OR-

B. Open the applications folder and locate **NAP**

Your screen will go black for some seconds and a small window will appear in the centre of your computer. Wait until another window appears that notifies you that any other programs that you have open will be closed. Select 'OK' to close any open programs.

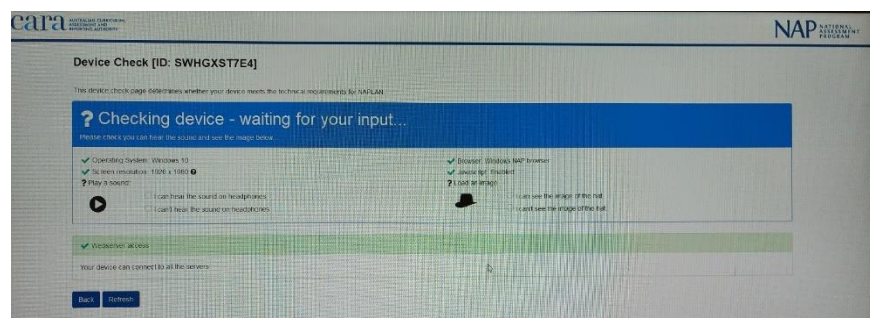
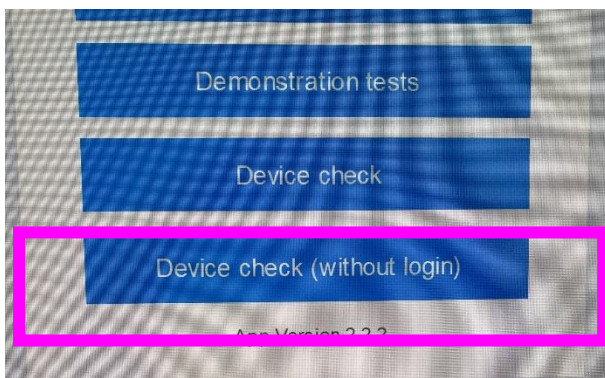


If you see the main menu, The NAPLAN Locked Down Browser is ready to test/use”



Step 4 - Test Sound

Select the 'Device Check (without login)' button, then 'Naplan 2022' in the main menu and complete the steps shown on the page. Please test with headphones to confirm sound works ok.



To exit the lockdown browser, scroll down and there is a cross in the bottom right hand corner of your screen.