

Senior School – Cloning an Assessment Outline - Quick Reference Guide

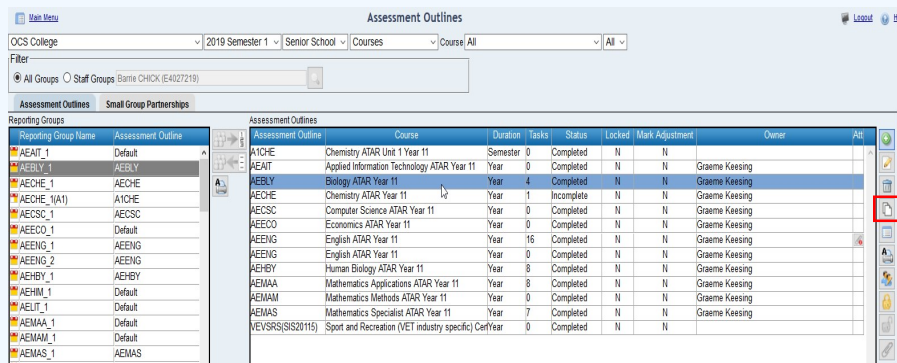
Cloning allows a new assessment outline to be created based on another assessment outline in the reporting period. To clone an assessment outline:

- * Log into Reporting to Parents
 - * Click on Assessment Outlines



- * Select the Reporting Period
 - * Select the assessment outline to clone

- * Click on the Clone Assessment Outline icon



- * Select the Course (if it needs to change)
 - * Select the Unit
 - * Enter the name for the cloned assessment outline

Clone Assessment Outline

Course: ▼

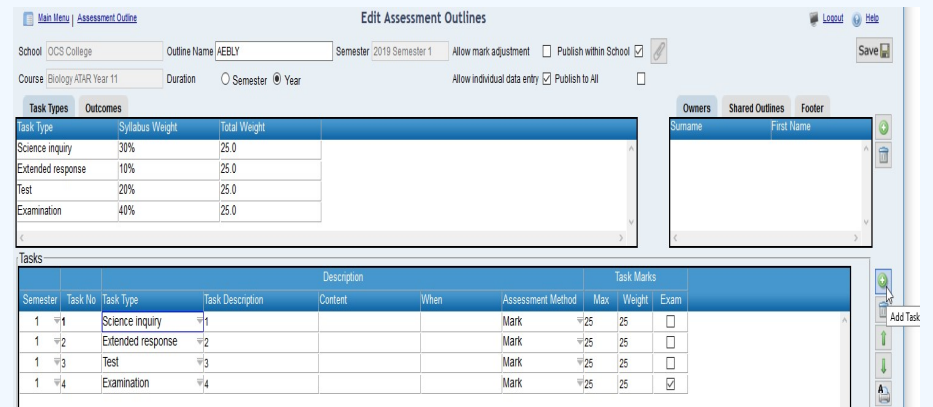
Show All

Unit: ▼

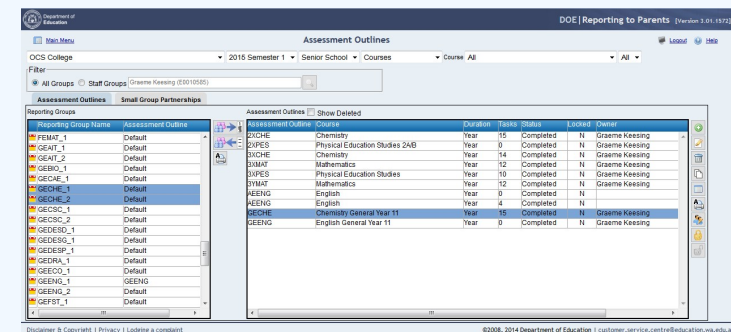
Name:

- * Click on the OK
- The assessment outline will open

- * Make any changes that are desired



- * Select the Reporting Group that the assessment outline will be assigned to.
 - * Select the assessment outline
 - * Click on the Assign selected Assessment Outline to selected Groups icon



- The assessment outline will be associated with the groups.
- Cloned assessment outlines can be edited as usual and are completely independent from the original assessment outline.