



MARGARET RIVER SENIOR HIGH SCHOOL NEWSLETTER

February 2018

DATES FOR YOUR DIARY

2018—Term One

WEEK 3

February 14th

Yr11 Biology—Perth Zoo Trip

February 16th

School Board Meeting

WEEK 4

February 19th

Rural Ops Rylington Park Camp

February 23rd

*Nominations—Faction Swimming
Carnival*

WEEK 5

February 27th

Parent Meet and Greet 4-6pm

February 28th

School Photos—Day 1

March 2nd

Yr12 School Ball

Surfing/Bodyboarding Comp

WEEK 6

March 5th

LABOUR DAY PUBLIC HOLIDAY

March 6th—9th

OLNA—Writing

March 6th

Upper School Sioree—6pm

March 7th

School Photos—Day 2

WEEK 7

March 14th

Yr10 Parent Night

Year 8 Immunisations

PRINCIPAL'S ADDRESS

It is great to be back at school, especially seeing new staff and students at Margaret River Senior High School.

The beginning of each new school year opens a new chapter. I would like to take this opportunity to welcome all students, parents and staff to Margaret River Senior High School for 2018. In particular, I welcome students who are new to Margaret River Senior High School, particularly the 201 Year 7 students and the 14 new students who are attending our school for the first time. We thank you for choosing our school and hope that your time with us will be both productive and rewarding.

This year we welcome 5 new staff to accommodate the increased enrolments at MRSHS. All new staff have been specifically selected to teach at Margaret River SHS. We welcome:

<i>Hayley Wills.....</i>	<i>English</i>
<i>Sally Elliot.....</i>	<i>English</i>
<i>Berin Sluiter.....</i>	<i>Physical Education</i>
<i>Sharyn Baillie.....</i>	<i>English</i>
<i>Aaron McRae.....</i>	<i>Technology and Enterprise</i>

We have had an excellent start to our school year with students and teachers returning after their holiday break invigorated and keen to get to work. The start to the school year has been extremely smooth, even with the building program being in progress and it is exciting to see many new enrolments which has resulted in our numbers increasing to 1052 for 2018. It was particularly pleasing to note the high level of compliance with our dress code at our first assembly; I thank students and parents for their assistance in this matter. A reminder that the school uniform is compulsory and has been endorsed by the Margaret River Senior High School Board.

I would like to congratulate and acknowledge the outstanding achievements of our Year 12 cohort in 2017. Our ATAR students were impressive with a median ATAR (rank to get them into university) of 81.2. These results were achieved through their hard work and determination throughout their time at MRSHS. I am very proud that their achievements enabled 46 out of the 48 students to attain results that will qualify them to apply for University entrance (48% of this cohort). This is a massive achievement for these students.

Our Vocation Education Training (VET) students were also extremely



Principals Address

PRINCIPAL'S ADDRESS continued....

successful in their endeavours with over 95% of these students achieving a Certificate II or higher in their final year.

I would like to thank the staff who worked with these students over the five years that they attended our school, assisting them to achieving these outstanding results. As well, I would like to acknowledge the terrific support we received from parents and the community in providing a wide range of opportunities these students.

Attendance

From the beginning of 2018 the school has had a clear focus on improving attendance rates at MRSHS. Whilst I understand that work commitments and schedules affect when families can take holidays, students missing school during these times is having a significant impact on their progress. I encourage parents to think carefully when planning holidays and take into account the impact on their children's education. Work will not be provided for students who are taking holidays and assessments that are missed may not be able to be rescheduled, thus effecting student's overall grades. This is particularly pertinent for students who have cumulative assessments in Year 11 and 12. Work will be provided for students who are on Australian or State representation, long term illness or exceptional circumstances that are approved by the Principal.

Student attendance rates will be a key factor in the School's Good Standing Policy, which will determine which students attend events such as end of year reward excursions.

In 2018, we again have a clear focus on providing students with relevant homework that is aimed to assist with completion of school courses and provide extension for high performing students. Parents are encouraged to assist by checking student diaries and helping set good study and homework routines at home. The school's Homework Policy can be viewed in detail on the school's Website in the 'About Us' section under School Policies: www.margaretrivershs.wa.edu.au.

Andrew Host

Principal



WELCOME TO OUR NEW YEAR 7'S!

Parent Meet and Greet

**Tuesday 27th February, 2017
3:30pm to 5:30pm**

Location: Lawn area in the front of the Auditorium

Parents/guardians are invited to the "Meet the Teachers" afternoon on Tuesday 27th February. All Parents are welcome but we would particularly like to meet Parents of our Year 7 students and those parents new to Margaret River Senior High School.

Financial Information

Dear Parent/ Guardian

Welcome to the 2018 school year. Please find following links that may be helpful to all our families.

- ✓ **Financial Information Booklet:**
<http://www.margaretrivershs.wa.edu.au/parents-and-community/financial-information/>
- ✓ **Secondary Assistance Scheme (SAS) \$350 towards school expenses:**
People with a Health Care Card (held in the name of a parent/guardian) & other concession cards may be eligible for up to **\$350** towards school expenses. The SAS application forms can be collected from the front office or downloaded from our website under Enrolments/Financial Information or see the link below.

CLICK TO DOWNLOAD THE SAS FORM.



Please return it to the front office at your earliest convenience. **SAS Applications close 13 April 2018**

Please feel free to contact the school on 9757 0700 if you have any questions.

I thank you for your support of our school and I wish you and your families all the best for the year ahead.

Yours sincerely,

Cristina Oliveira
Manager Corporate Services

Student Absences

Missing School Matters



Informing us about your child's absence from school

The education act requires parents/guardians to inform the school as to why their child is absent from school within 3 days of the absence.

This can be done by one of 3 methods:

1. Sending a note to the form teacher with your child
2. Ringing Student Services on 9757 0745 or 9757 0795
3. Sending an email to MargaretRiver.SHS.Absentees@Education.wa.edu.au

Should students need to leave during the school day for any reason, a parent or guardian can use the above methods to notify the school. All students are required to sign out through the Student Services Office.

Should you have any queries please contact me on 9757 0720.

Hetty Bogerd
Deputy Principal

MRSHS Good Standing Policy

Good Standing aims to recognise and assist students to take responsibility for their actions and to encourage each student to improve his or her own performance.

The outcome sought for each student is to maintain focus on their educational outcomes by being responsible for their own success. It is expected that all students will maintain their Good Standing.

To track Good Standing, Student Services will look at the following :

- Attendance
- Behaviour
- Academic performance (Work Standards)
- Uniform

If a student is suspended they will automatically lose Good Standing for a period.

Should a student lose Good Standing they will be unable to represent the school or participate in excursions until Good Standing is restored. Parents will be notified.

Coles Sports For Schools



Our school has registered for the Sports for Schools programme for 2018. When you shop at Coles please collect the vouchers and send your vouchers into school with your son or daughter.



Step 1—For every \$10 spent at Coles, you will receive one Sports for Schools voucher.

Step 2—You then send the vouchers to the school, placing them in the collection bins provided in the Library, Student Services and Administration Areas.



Step 3—Every voucher you donate to your school can be redeemed for leading brand sports equipment.

Thank you for your support; free equipment for little effort.

The school will then provide more equipment for the students to enjoy during recess and lunch times on our school oval.

Mrs Vicki Williamson

Coles Sports for Schools Coordinator

Uniform Shop



BACK TO NORMAL OPENING HOURS

The uniform shop has now returned to normal opening hours 8:30am - 10:30am on Thursday 1st February 2018.

Any enquiries relating to school uniform purchases can be made via 0423 643 303.

Please refer to the MRSHS Website for the Uniform Policy: <https://www.margaretrivershs.wa.edu.au/school-policies/uniform-policy/>



Job Vacancy—MRSHS Canteen Assistant

MRSHS requires a **casual Canteen Assistant** for two days per week on Wednesdays and Fridays between 7.30am to 2.30pm.

Your Main Duties & Responsibilities include: - Prepare and Cook Food - Counter service to students and teachers - Cash handling using calculation mathematical skills and abilities - Well organised - Able to follow instructions - Excellent communication skills.

For further information please call Kerry on 0487 318 130.

Address your Application and Resume to the MRSHS P&C Association President and deliver to the Main Office at 158 Bussell Hwy, Margaret River.



OLNA and NAPLAN Testing

Western Australian students are required to demonstrate the minimum standard in reading, writing and numeracy to be eligible to achieve the Western Australian Certificate of Education (WACE). If a Year 9 student achieves Band 8 or higher in their NAPLAN testing they are not required to sit the corresponding components of the OLNA in Years 10, 11 and 12.

NAPLAN TESTING

Year 7 and 9 students at MRSHS will be taking part in NAPLAN testing from 15th to 17th May this year. NAPLAN is a national assessment and all students are expected to participate. NAPLAN is accessible to all students to demonstrate their actual skills and knowledge and we have enclosed a copy of the information to Parents brochure to outline specific details in relation to these tests.

The best way you can help your child prepare for NAPLAN is to reassure your child that the tests are just one part of their school program and to urge them to simply do the best they can on the day.

OLNA TESTING

The next round of OLNA testing will be conducted from 6th to 29th March 2018. Parents have been notified by email if your child will be sitting any of the OLNA tests during this time.



Government of Western Australia
School Curriculum and Standards Authority



Our Ref: EX2161/09 2017/62318

Dear parent/carer

I am writing to provide information about the Online Literacy and Numeracy Assessment (OLNA). I will explain its purpose and what it means for your child.

In 13 years of compulsory schooling we expect young people to have developed the literacy and numeracy skills required for the next phase of their life. We believe this is very important, which is why it is a requirement for students to demonstrate a minimum standard of literacy and numeracy to be eligible to achieve the Western Australian Certificate of Education (WACE).

This standard reflects the skills that are described in Level 3 of the nationally accredited *Australian Core Skills Framework*.

This standard can be demonstrated in two ways:

- performance in the Year 9 National Assessment Program – Literacy and Numeracy (NAPLAN), or
- performance in the OLNA.

If students achieve Band 8 or higher in their Year 9 NAPLAN reading, writing or numeracy tests they are not required to sit the corresponding components of the OLNA. While NAPLAN and WACE achievement are independent, research has shown that students who achieve Band 8 in Year 9 NAPLAN are working at or above the minimum standard required for the WACE. They are, therefore, not required to again demonstrate their skills in the corresponding component through the OLNA.

Students who need to demonstrate the minimum standard in reading, writing and/or numeracy are scheduled by their school to sit the required components of the OLNA each March and September from Year 10. This gives students up to six opportunities before the end of Year 12 to demonstrate the required skills in each

Letter to Year 9 OLNA Parents from SCSA

- 2 -

component. Once a student has demonstrated the required skills in a component they are not required to sit that component again.

As its name indicates, the OLNA is an online test. The reading and numeracy components each comprise 45 - multiple-choice questions and students have 50 minutes to complete each component. The writing component is a typed response of up to 600 words. Students have 60 minutes to complete this component.

If your child did not achieve at least Band 8 in all three tests in Year 9 NAPLAN, I would encourage you to read the *OLNA Information for parents/carers brochure*, which is available online at <http://senior-secondary.scsa.wa.edu.au/assessment/olna>. While you are on the website, I would also encourage you to look at other available information.

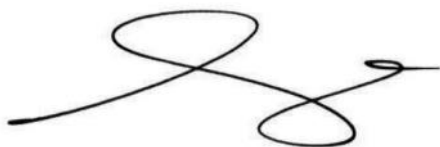
Schools are expected to provide students with access to the OLNA Practice tests and/or the OLNA Example tests. Students can use the Practice tests to familiarise themselves with the assessment format and website functionality. The Example tests provide students, teachers and parents/carers with a complete test that is indicative of the difficulty and the diversity of skills assessed. There is an Example test for each of the reading, writing and numeracy components. It includes a set of 45 multiple-choice questions for reading; a set of 45 multiple-choice questions for numeracy and one writing prompt. Users have 50 minutes to complete the reading and numeracy components and 60 minutes to complete the writing component.

After each OLNA round, the Authority provides schools with individual feedback on each student's performance. Schools can use these reports to structure student learning to assist them in developing the skills they need to demonstrate the required standard. Significantly, those students at risk of not achieving the minimum standard of literacy and numeracy are identified through their performance in the OLNA. For these students, schools can deliver Foundation courses, which have been specifically developed to improve literacy and numeracy standards. There is also an interim report schools can use to keep parents/carers informed of their child's progress.

The Authority reports on student performance at the end of Year 12 through the Western Australian Statement of Student Achievement (WASSA). If a student has demonstrated **all** of the WACE requirements, the student will also receive a WACE. More information about the WACE requirements is available on the Authority website at <http://senior-secondary.scsa.wa.edu.au/the-wace/wace-requirements>. Students who do not manage to demonstrate the literacy and numeracy standard by the end of Year 12 will be able to 'bank' their other achievements whilst they continue to work towards achieving their WACE. The WACE can be achieved over a lifetime.

If you have any further questions I encourage you to speak with your school. Schools are best placed to advise you on your child's learning development. If you have specific questions about the OLNA and cannot find the answer on our website, please email us at olna@scsa.wa.edu.au.

Yours sincerely



ALLAN BLAGAICH
EXECUTIVE DIRECTOR
SCHOOL CURRICULUM AND STANDARDS

15 November 2017

News from the Library

CONNECT FOR PARENTS

We are pleased to announce that **Connect** access to parents is again being used in our school as a means of sharing students' marks, learning content and some notices with some of your child's classes. All parents/guardians should have now received their parent login to **Connect** via email. (NB: that any '0' in the username are zeros.)

When you login to **Connect** you will be able to see information specific to your own child/ren such as:

- The classes in which your children are engaged in using **Connect**
- Week by week attendance information
- Marks book information drawn from Reporting to Parents in *some* subjects - this will be expanded to all subjects later this term.
- Unit outlines for all subjects
- Notices from classes that automatically generate an email notification to you.

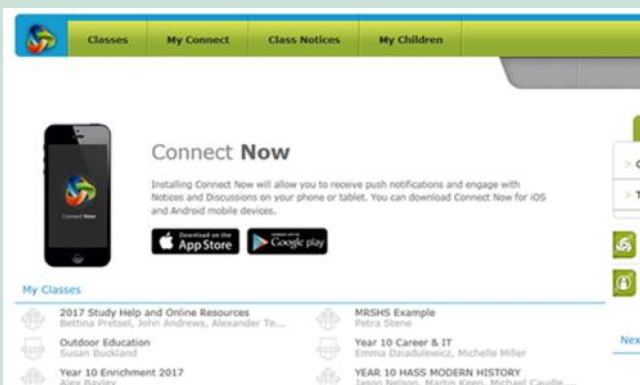
Please note:

- All marks are subject to moderation and different weightings; therefore they may not reflect the final mark and grade.
- Not all subjects will have content in Connect and the use of Connect will differ across learning areas.
- All parents/guardians with Parental Responsibility will be enrolled in Connect - if you are enrolled and would **not** like to participate - please email us at MargaretRiver.SHS@education.wa.edu.au.
- You can customise the amount of notifications you get within the Connect website. If you require help with this please email me at Petra.Stene@education.wa.edu.au.

If you have any issues accessing Connect please contact the Library on 9757 0744 or email me at Petra.Stene@education.wa.edu.au.

Petra Stene

Library/ICT Coordinator



VIRTUAL REALITY @ MRSHS

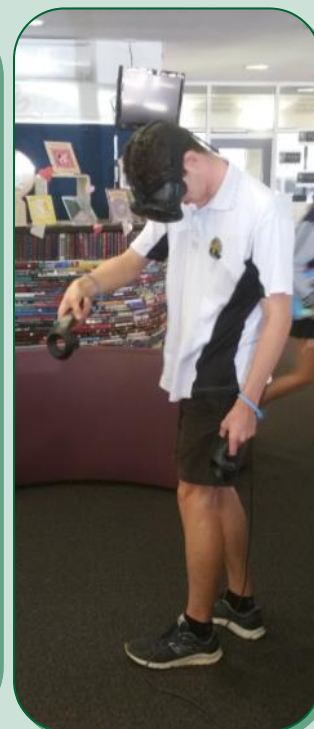
As part of our **Enrichment and Engagement program** the Library and Art have invested in two Virtual Reality (VR) sets with the vision to integrate VR into every subject area.



The HTC Vive VR sets allow students to travel and explore places all over the world, engage with key events from the past and to experience a wide variety of situations and environments without leaving the classroom. Virtual Reality gives a depth to educational content where situations are brought to life; allowing students to engage their senses and explore the various situations in an immersive nature.

Art with Mrs Marzohl-Duffy is using the Tilt Brush program to create 3D artworks that they can then explore in the virtual world. The library has invested in different programs to use in Science, Maths, Careers, The Arts, English, Humanities & Social Science, Health and Phys Ed. We have been using the Vive VR sets to engage students with educational difficulties and our initial work with these students is promising. We are continually updating and expanding our collection as new titles become available.

We are looking forward to using it across the school to enhance all student learning. If you are interested at having a look please contact Petra Stene at the library on 9757 0744.

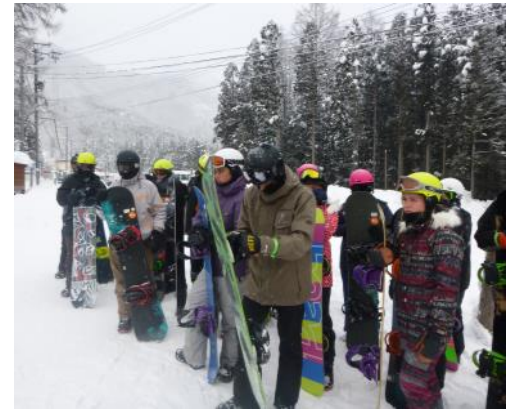


2018 Japan Cultural Tour

Action packed and fun and hopefully an experience you will never forget!

- ✓ 10 days,
- ✓ 33 people,
- ✓ 16282 kms travelled,
- ✓ Snow,
- ✓ Buddhist Temples and Shinto Shrines,
- ✓ Ameoko markets,
- ✓ skiing,
- ✓ Largest fish market in the world,

- ✓ Jumping stadium,
- ✓ Snowboarding,
- ✓ Fish for breakfast/lunch/tea,
- ✓ Snowball fights,
- ✓ Starbucks,
- ✓ Vending machines,
- ✓ AND more snow!!!!





SchoolTV is now available at Margaret River Senior High School!!!

This month on SchoolTV - School Transitions

Whether it is starting school for the first time, moving up to a higher grade or embarking on a journey through secondary school, there is no doubt that any school transition is a very exciting time for children and parents. It means your children are growing up!

However, transitioning is an ongoing process. It can continue long after students have entered their new environment and may encounter difficulties at a number of different stages. These stressors may appear as anxiety and frustration and result in negative or disruptive behaviours. Such behaviours can become problematic making the transitioning process even more difficult for children and parents.

This month on SchoolTV - Surviving Year 12

The final year of secondary school is a year of hard work and a huge commitment for students. With so much going on it can be hard to find the balance between study and life. It is a time when personalities start to emerge, there are more complex interpersonal relationships and there is the pressure to perform academically. With all of this going on, it's not surprising that some students have an emotional response and it is therefore extremely important for parents to know how to support their children during this time.

Some kids will need more support than others. Keeping the communication lines open with your child, their teachers, mentors and other parents will be crucial. Being aware of your child's mental and physical wellbeing can play a vital role in their success.

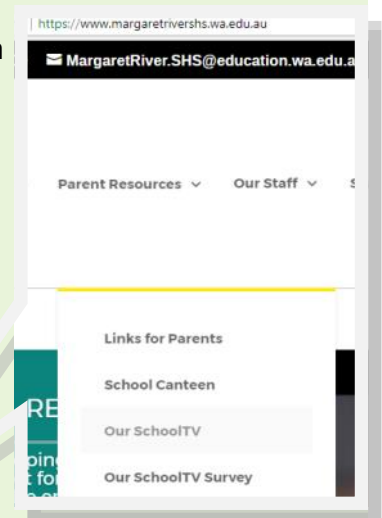
In this edition of SchoolTV, parents will learn practical strategies to assist your child during both of these very important stages. We hope you take time to reflect on the information offered in this month's edition and we always welcome your feedback.

If you have any concerns about your child, please contact the school counsellor for further information.

Here is the link to this month's edition:

[School Transitions](#)

[Surviving Year 12](#)





TUNING IN TO TEENS Parenting Workshop

A FREE SIX SESSION PARENTING PROGRAM FOR PARENTS/CARERS OF CHILDREN OF AGED 11-16

WOULD YOU LIKE TO LEARN HOW TO:

- Communicate with your teen more effectively?
- Help your teen manage those difficult emotions?
- Help to prevent behaviour problems in your teen?
- Teach your teen how to make friends and deal with conflict?
- Help your teen develop emotional intelligence?

RESEARCH HAS SHOWN THAT ADOLESCENTS WITH HIGHER EMOTIONAL INTELLIGENCE:

- Have better concentration at school
- Are more able to cope when upset or angry
- Have fewer mental health and substance abuse difficulties
- Have more stable and satisfying relationships?

EMOTIONAL INTELLIGENCE MAY BE A BETTER PREDICTOR OF ACADEMIC AND CAREER SUCCESS THAN IQ!

Where: Margaret River Community Resource Centre (Old Hospital), Tunbridge St, Margaret River

When: Every Monday Feb 12th, 19th, 26th & March 12th, 19th, 26th, 2018 Excluding Mar 5th (Public Holiday) Time - 9.15 to 11.45

Cost: FREE (Limited Places)

Facilitator: Kerry Hawkins (Relationships Australia).

Phone: 61640614 (Leave Message) or **Email:** kerry.hawkins@relationshipsaustralia.org.au

Supported by



Community Noticeboard



Margaret River Hockey
"proud past - bright future"

It's Registration Time!
Fielding teams from Pre-Primary to Year 12

To register and learn more visit
Western Oval Pavilion, Gloucester Park on

Friday 9th February
3.30 - 6.00 pm

Junior Teams
Hook in 2 Hockey (PP - Year2)

Boys and Girls Teams
Years 3-5, Years 6-8 and Years 9-12

Senior Teams
Men and Women

Bring along your stick for a social hit!

Or register online at
www.margaretriverhockey.org.au

Any questions contact Maxine Williams
E. mrjuniorhockey@mail.com
M. 0448 807234



TWEEN ART

for CREATIVES of the IN 'BETWEEN' ages of 11-15 years

The perfect artistic outlet and social hub for like-minded creatives aged 11-15yrs.

This afterschool art program gives Tweens an opportunity to explore a variety of art mediums, styles and approaches.

The program strives to create an environment, provide the resources and approach art in a way that encourages young people to problem solve, embrace curiosity and individual thought in order to express themselves authentically. To nurture these qualities and the creative spirit the classes are a combination of open-ended 'process' based creative invitations and more structured sessions to develop skills and art appreciation in an environment that is fun, flexible and relevant to tween culture and interests.

I encourage the Tweens to request projects and share their interests with the group so that I can build programs that are flexible and age appropriate taking interests and trends on board.

"Every child is an artist, the problem is staying an artist when you grow up"
Pablo Picasso.

Let's keep the creative play alive, right through from a tween to adulthood.



FEES: \$170 per term
Quality art materials and afternoon tea included.

TIMES: Tuesdays 3.30-5pm

VENUE: Margaret River Community Resource Centre
Tunbridge Street

Contact Kate Dunn AthR
BA (Fine Arts) MA (Art Therapy)
0431020222
kateellendunn81@gmail.com



MARGARET RIVER TENNIS ACADEMY

Club Coach: Pablo Gomez Pujalte
Contact number: 0478773520
Email: mrtennisacademy@gmail.com
Website: www.mrtc.org.au

We run the coaching program at the Margaret River Tennis Club. Our goal is to bring tennis to all ages and levels, trying to make everyone better player and gain confident on the court in a fun environment. For the younger children, we use special modified equipment with smaller racquets and low compression balls so they can improve and play quicker.

AFTER SCHOOL LESSONS

Term 1 2018 After School Lessons - 10 Weeks from 05/02 till 13/04				
Class	Days	Age	Time	Cost
Mini Tennis	Monday	3-4 year old	3.45 - 4.15 pm	\$8 per class
Red Ball	Tuesday, Wednesday, Thursday	5-6 year old	3.45 - 4.30 pm	\$150 Term \$16 Casual
Orange Ball	Monday, Tuesday, Wednesday, Thursday	7-9 year old	4.30 - 5.30 pm	\$165 Term \$18 Casual
Green Ball	Monday, Tuesday, Wednesday, Thursday	9 - 11 year old	4.30 - 5.30 pm	\$165 Term \$18 Casual
Yellow Ball	Thursday	12+ year old	5.30 - 6.30 pm	\$165 Term \$18 Casual
Yellow Squad For kids ready to camp	Tuesday	12+ year old	5.30 - 7 pm	\$200 Term \$22 Casual
Junior League	Saturday	9 + year old	8.30 - 11.30 am	\$5 Members \$10 Non Members

Note: The prices of Term1 are for 10 weeks, if you are no able to commit for all the weeks let us know and you can book less weeks.

PRIVATE LESSONNS

1 Hour - \$60 30 min - \$30

We offer free trial lesson in a group for all new players.

If lessons are rain out we will reschedule before the end of the Term or you can get credit for other programs.

For families we offer 10% discount for second child and 50% discount for third child, on group After School Program.

You can bring your own racquet or we can provide you with one.

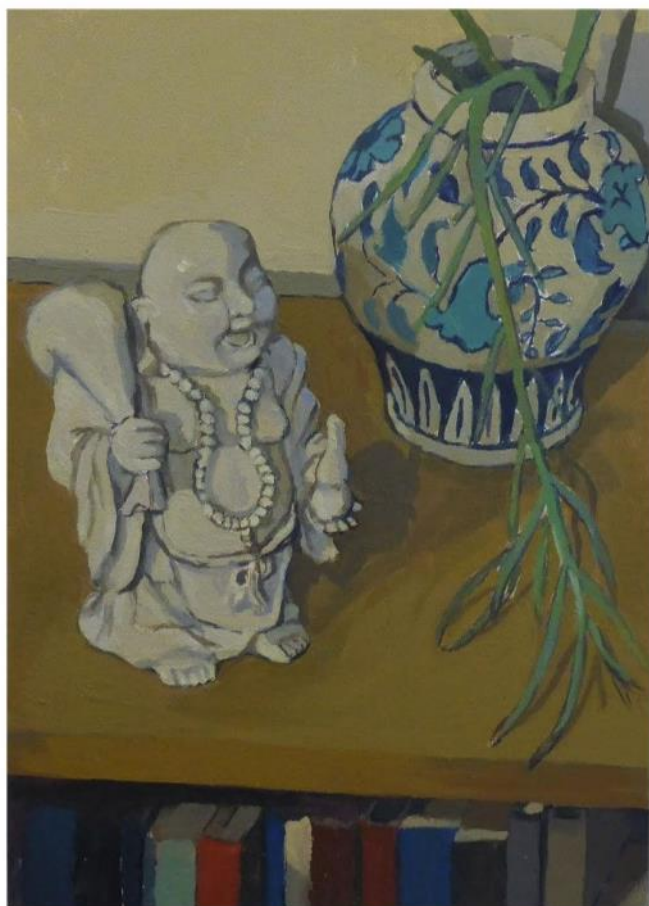
Check the website www.mrtc.org.au for **ADULT COACHING**

For bookings: contact Pablo at mrtennisacademy@email.com or 0478773520



We're here. Anytime. Any Reason.
kidshelpline.com.au

Community Noticeboard



'Good Luck and Best Wishes'

An exhibition of paintings by Sam James

Special Cocoon Gallery Launch

Saturday 17th February, 1 – 3pm

All Welcome

Light refreshments provided

Please RSVP to the Library on Ph: 9780 5600

Email: amrlibrary@amrshire.wa.gov.au

Sam's still life oil paintings are inspired by a variety of objects in his studio that relate to ideas of good luck. The exhibition runs from 1 February through to 31 March.

The Cocoon Gallery is situated in the entrance to the Margaret River Library, Fearn Ave.



the **cOcooN**
....gallery for emerging artists



Margaret River Library presents

'Goal setting': a workshop by **Stephanie Holland**

22nd February

6 – 7:30pm

Free event

Light refreshments provided

Please RSVP by 21 February to
amrlibrary@amrshire.wa.gov.au

Learn how to set high integrity goals

Gain tips on how to stay motivated and inspired

A valuable handbook for fledgling entrepreneurs who are burnt out and 'over it'

